

Izzy Kratchman

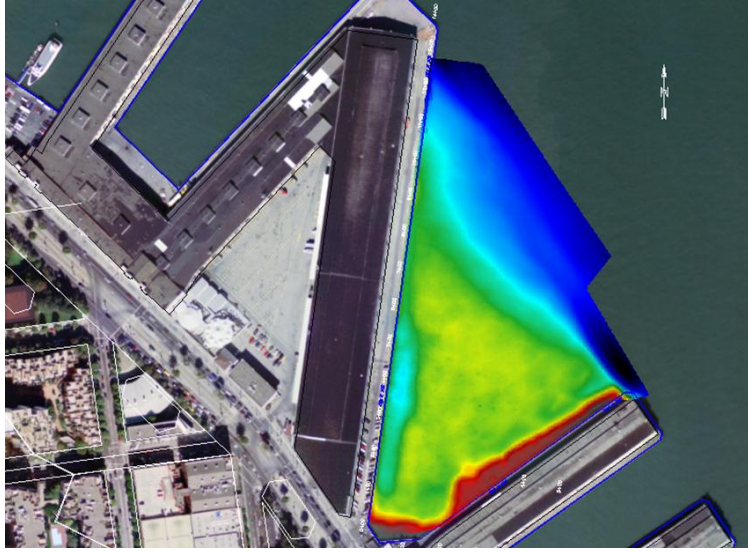


Meet Izzy, a 2014 CofC graduate with a major in Geology and a minor in Environmental Studies.

After graduation I started working as a hydrographer for eTrac Inc, a hydrographic survey company located in the San Francisco Bay area. At eTrac I have been able to step into every aspect of hydrographic surveying, from setting up multibeam sonar and positioning equipment onto a boat, performing hydrographic and topographic surveys, cleaning and analyzing data, to composing and organizing reports and deliverables for clients. Since I began in July I have surveyed projects in the port of San Francisco, the port of Oakland and a small marina in San Francisco. These projects have all been for proposed dredging. eTrac will continue surveying in these areas during the dredging project to monitor the volume of material. I am learning how to process data in Hypack, Qinsy, and Qloud and model data using AutoCad Civil 3D. These projects have all been day trips requiring 6 to 10 hours of survey time on the boat. I have loved being able to go out on the boat and survey in this area, the views of the Golden Gate bridge, Alcatraz, the city and the surrounding hills are spectacular. Below are some photos from some of the work I've been doing.



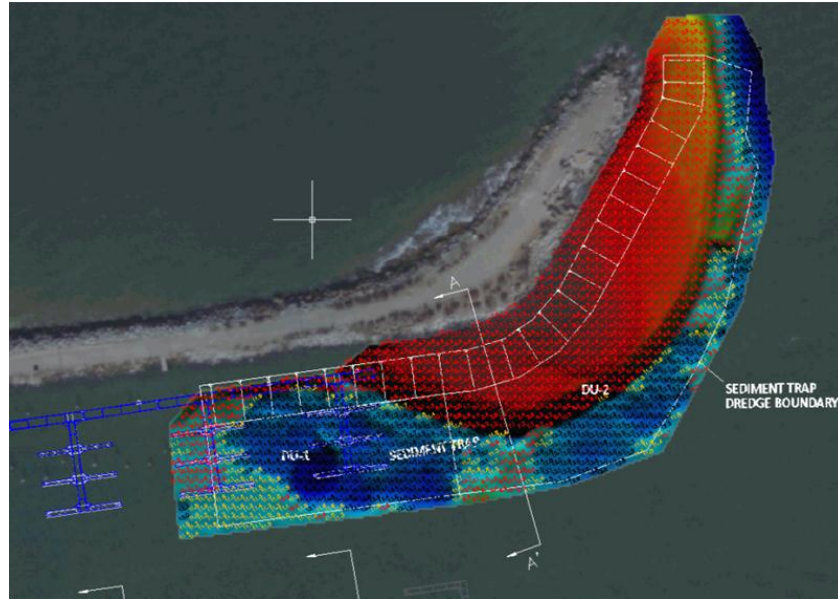
Collecting multibeam data on The Pulse (one of our many vessels)



Hydrographic survey of the Port of San Francisco



View from the boat "office" while surveying



Hydrographic and topographic data were combined to map a sediment trap in a marina in San Francisco